

ProView™ Universal V-groove Clamp

FIBER END FACE INTERFEROMETER & MICROSCOPE



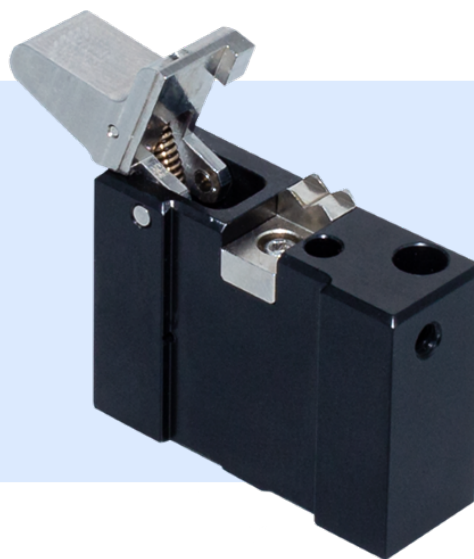
The ProView Universal V-groove Clamp is a replacement part for the NorthLab's ProView LD line of products to support inspection of fiber diameters from 125 to 1200 μm . Typically, the v-groove clamp is pre-mounted on the base plate on delivery of the base unit.

The universal v-groove clamp assembly can accommodate standard fiber holders from FITELE or Fujikura but also allows the use of bare fibers.

Comes with a detachable soft closing mechanism to prevent damaging the fiber when closing the lid and a small range of shims to support a wide range of coating diameters.

Key Features

- For fiber cladding diameters from 125 to 1200 μm
- Soft closing mechanism to not damage the fiber
- Supports standard fiber holder from FITELE and Fujikura
- Compatible with all ProView base unit models
- Replacement requires software recalibration



Technical Specifications

Dimensions: 33(w) x 12(D) x 40(H) mm

Weight: 0.03 kg

Fiber diameter: 125 to 720 μm

Product

NorthLab ProView™ XD Universal V-groove Clamp

Part

IF-90-01004

Qty

Standard Package

Platform for FITELE (S712) F/H

IF-90-01001

1

Platform for FITELE (S713) & F/H

IF-90-01002

1

Shims (100, 400, 600, 800, 1000 μm)

IF-90-01003

1

Information is subject to change without notice.